
How to complain?

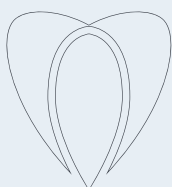
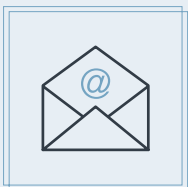
We welcome all feedback, both positive and negative, and we will approach your complaint as an opportunity to learn and improve our service in the future. We will not react defensively to your complaint and your confidentiality and access to our services will be protected.



You can raise your concern directly to any member of our team **verbally** in person or by **calling** the practice.



Alternatively, you can **email** or **write** to the practice manager directly.



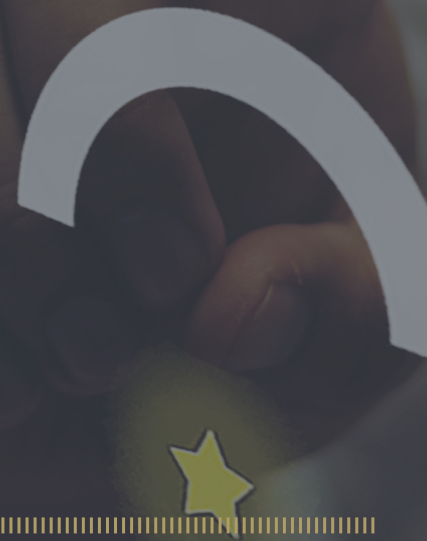
Should you prefer to contact Portman Dental Care directly you can do so by emailing complaints@portmandental.co.uk

PORTMAN dental care

portmandentalcare.com

PORTMAN
dental care

Feedback & complaints



At Portman Dental Care we pride ourselves on the high quality of care we provide our patients and we aim to look after you as we wish to be looked after ourselves. However, if you have any concerns or comments regarding your dental care which you wish to raise, we will address these as a matter of priority.

Our core principals

- All of your feedback is important to us.
- We want to make it easy for you to raise a concern or complain, if you need to.
- We follow a complaints procedure and keep you informed.
- We will try to answer all your questions and any concerns you raise.
- We want you to have a positive experience of making a complaint.
- Your feedback helps us to improve our service.

Our commitment to you

We will take your complaint seriously and we will respect your confidentiality.

- ✔ We will acknowledge your complaint in writing within 3 working days.
- ✔ We will alert our complaints coordinator of your complaint.
- ✔ If your complaint is regarding clinical care, your complaint will be passed to the treating clinician in order for them to provide a response and resolution.
- ✔ We will aim to provide a response to your complaint in full within 20 working days.
- ✔ If there is a delay in providing you a response, we will contact you and advise you of the delay at the earliest possible time.



Third Party Escalation

We hope that in all cases we would be able to resolve your complaints. If, however you remain unhappy with the resolution of your complaint, please contact us and will conduct an internal review. If after this you remain unhappy, you can contact a independent third party to review your complaint. The details of this are below:

Private patient

Health Inspectorate Wales
Welsh Government, Rhydcar Business Park,
Merthyr Tydfil CF48 1BR

Tel: 0300 062 8163 | **Email:** hiw@gov.wales

Dental Complaints Service
Dental Complaints Service, 37 Wimpole Street,
London W1G 8DQ

Email: info@dentalcomplaints.org.uk

Online form: [contactus.gdc-uk.org/dcs/
Complaint/PrivatePatients](https://contactus.gdc-uk.org/dcs/Complaint/PrivatePatients)

Denplan patient

The Head of Customer Services, Denplan
Limited, Simplyhealth House, Victoria Road,
Winchester SO23 7RG.

Email: customerrelations@denplan.co.uk

NHS patient

Freepost RTJR-ZKJG-JZTC
Patient Support Services, Hywel Dda
University Health Board, Fishguard Road,
Haverfordwest SA61 2PZ

Email: hdhb.patientsupportservices@wales.nhs.uk

Fax: 01437 773353 | **Text:** 07891 142240

Or Public Services Ombudsman for Wales,
1 Ffordd Y Hen Gae, Pencoed, Bridgend
CF35 5LJ

Tel: 0300 790 0203

Email: ask@ombudsman-wales.org.uk

NHS patients can raise concerns directly to their local health board, contact information for your local health board can be found at: [wales.nhs.uk/
ourservices/contactus/nhscomplaints](https://wales.nhs.uk/ourservices/contactus/nhscomplaints)